



# Instrument contributing to Stability and Peace

## Article 3

*EPLO - CSDN - Funding Instruments Meeting - 12 December 2018*

*- Simon Bojsen-Moller, FPI.2*

# Instrument contributing to Stability and Peace (IcSP)

## Objectives



**Article 3 IcSP  
Regulation**  
(at least 70% of budget)

**Assistance in response to situations of  
crisis or emerging crisis to prevent conflicts**

**Article 4 IcSP  
Regulation**  
(9% of budget)

**Assistance for conflict prevention, peace  
building and crisis preparedness**

**Article 5 IcSP  
Regulation**  
(up to 21% of budget)

**Assistance in addressing global and trans-  
regional threats and emerging crisis**

**F  
P  
I**

**D  
E  
V  
C  
O**



- Global reach
  - Flexibility and rapidity
  - Subsidiary measure
- 
- Cannot do humanitarian aid
  - Cannot do actions of military nature (NB! CBSD)



European  
Commission

https://icspmap.eu/ Instrument contributing to ... x

ABAC Workflow - Release ... SYSPER Login CRIS (BOJSESN on cris\_ap... Google

Commission and its priorities Policies, information and services

European Commission

European Commission > DGs > Service for Foreign Policy Instruments > Instrument contributing to Stability and Peace - Map of projects

## Instrument contributing to Stability and Peace - Map of projects

Project showcases | Global projects | UN-implemented projects | About IcSP

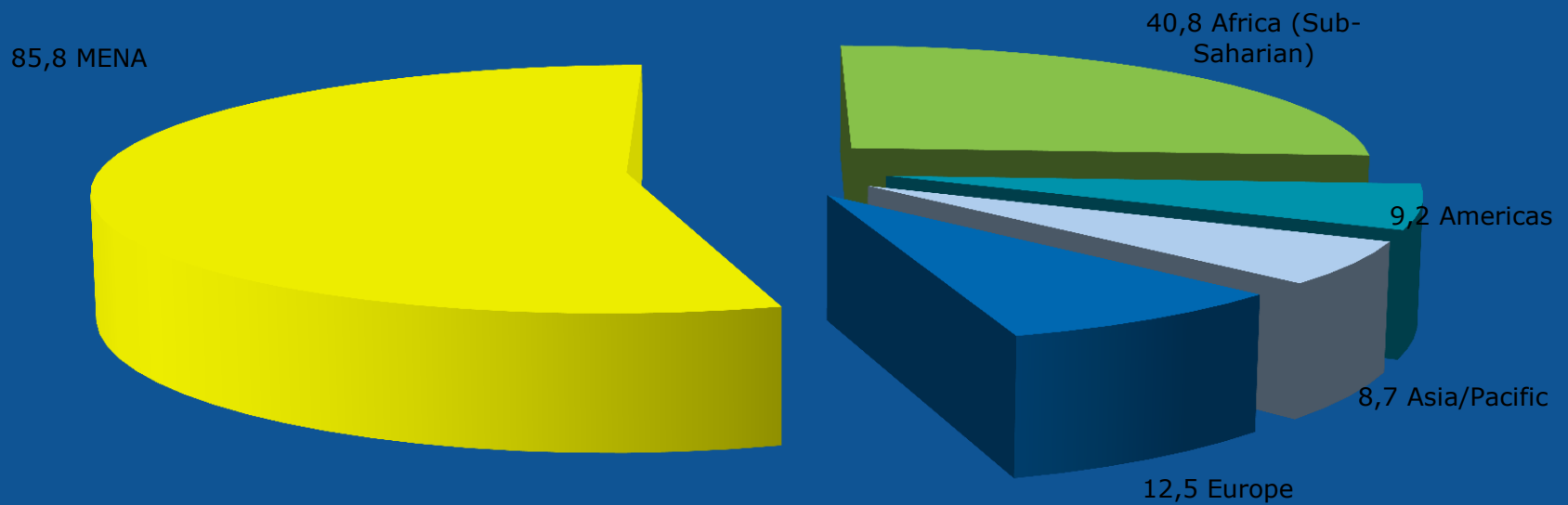
< MAP

- 0 THEME
- 0 START YEAR
- 0 LOCATION
- RESET

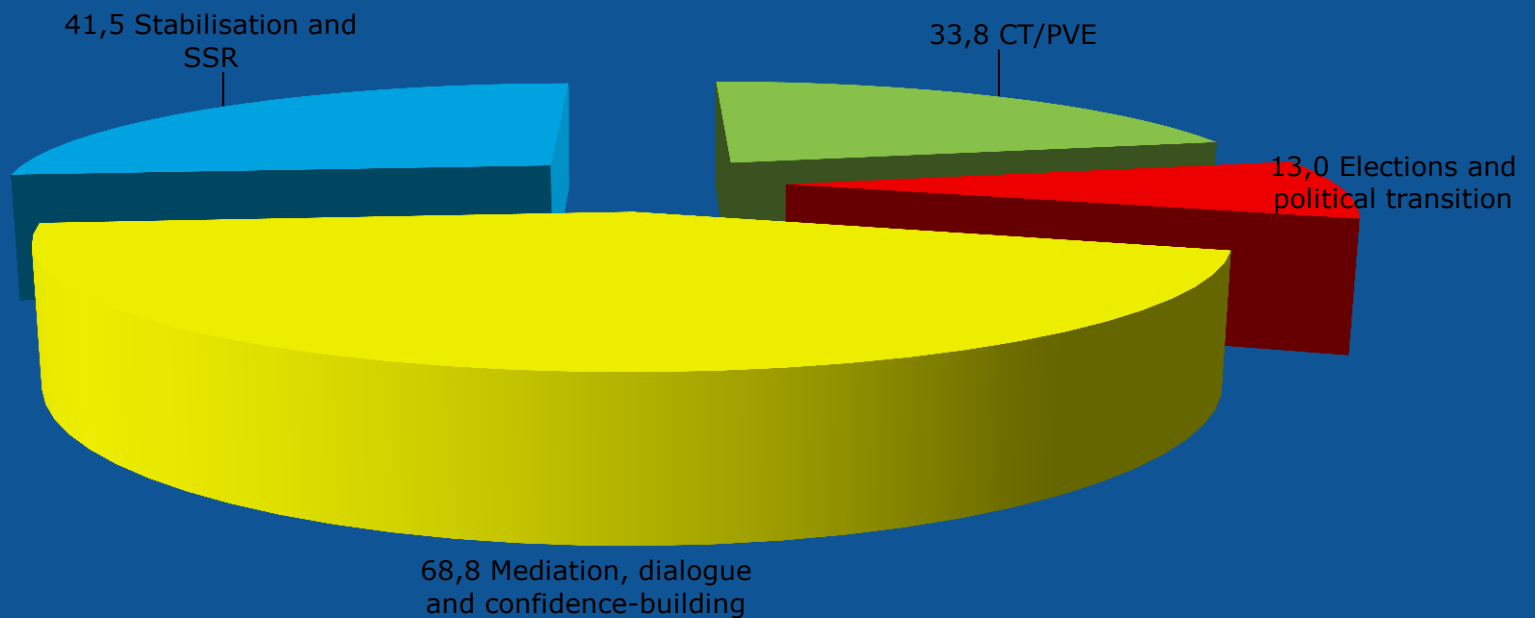
Search:

14:39 10-12-2018

## 2017 IcSP Total allocation by Region (EUR Mln)



## 2017 IcSP: Total allocation by thematic area (Mln EUR)





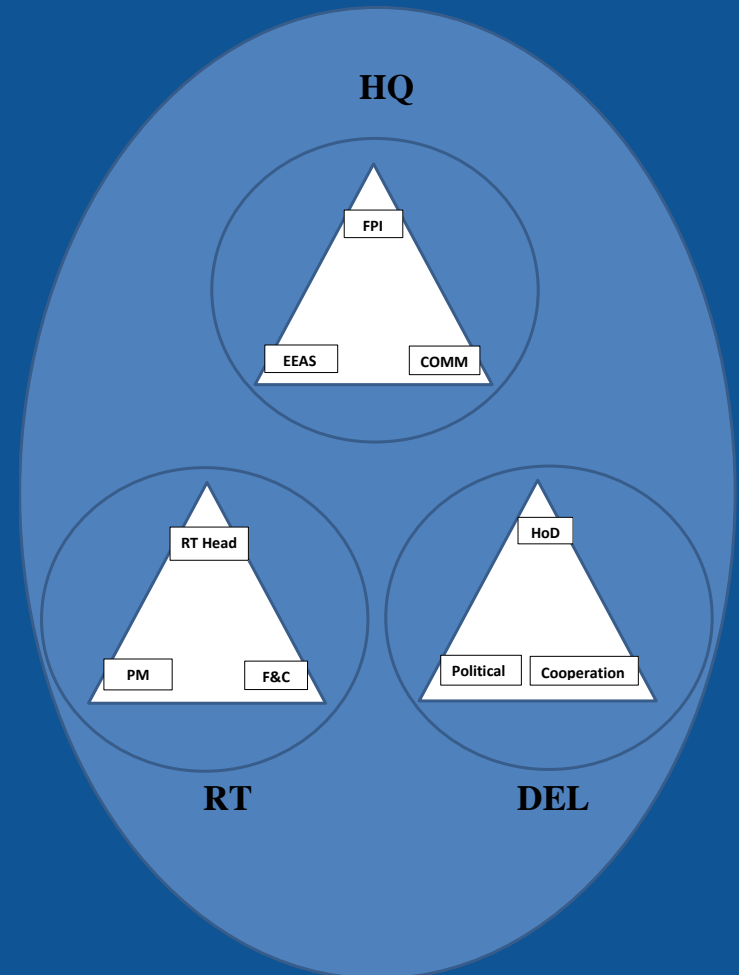
Decision making process (Article 3) is exceptional and fast

- Responding to political priority/need
- Identify a need compatible with IcSP mandate and a proposed response
- Consultation in-house and to Member States
- 'Normal' time for adoption three months
- Timespan between decision and contracting should be maximum four months

Ideas for actions can come from/through:

- Delegation level
- RT level
- HQ level

Regardless of point of entry – actions will have to receive support from DEL, RT and HQ to be viable







**Thank you**